

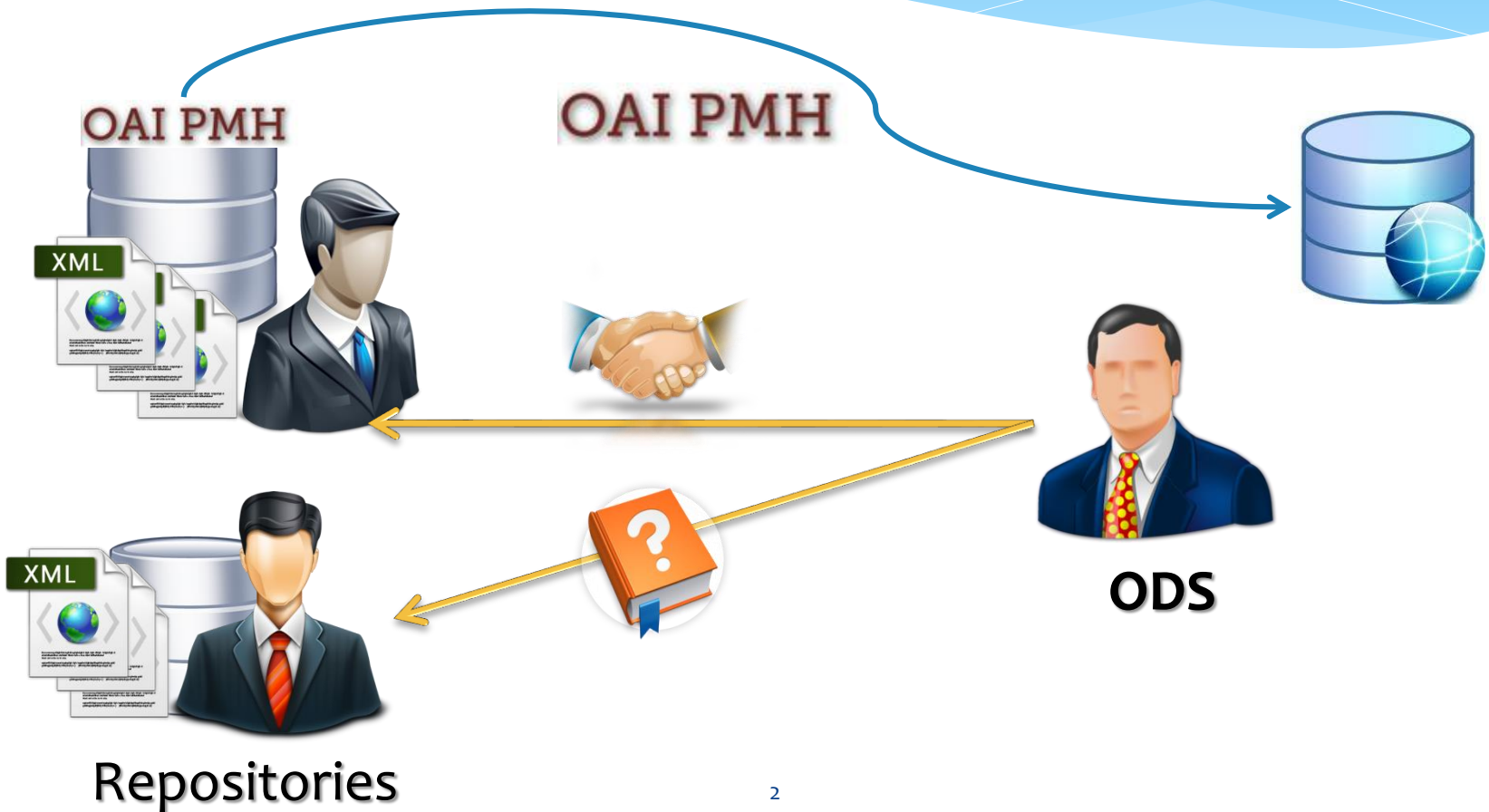
Aggregating metadata from educational repositories the ODS experience

Edrene Conference, 6 May 2014, Athens
Kostas Vogias (GRNET), Enayat Rajabi (UAH)

vogias@admin.grnet.gr

Enayat.rajabi@uah.es

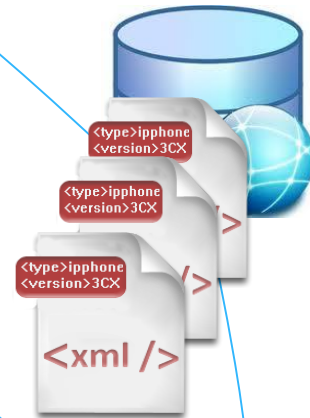
Harvesting



Processing and importing



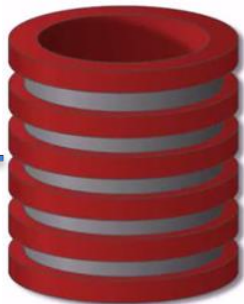
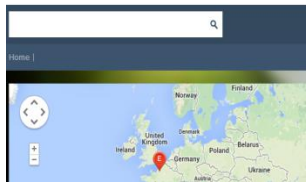
Process



Updater



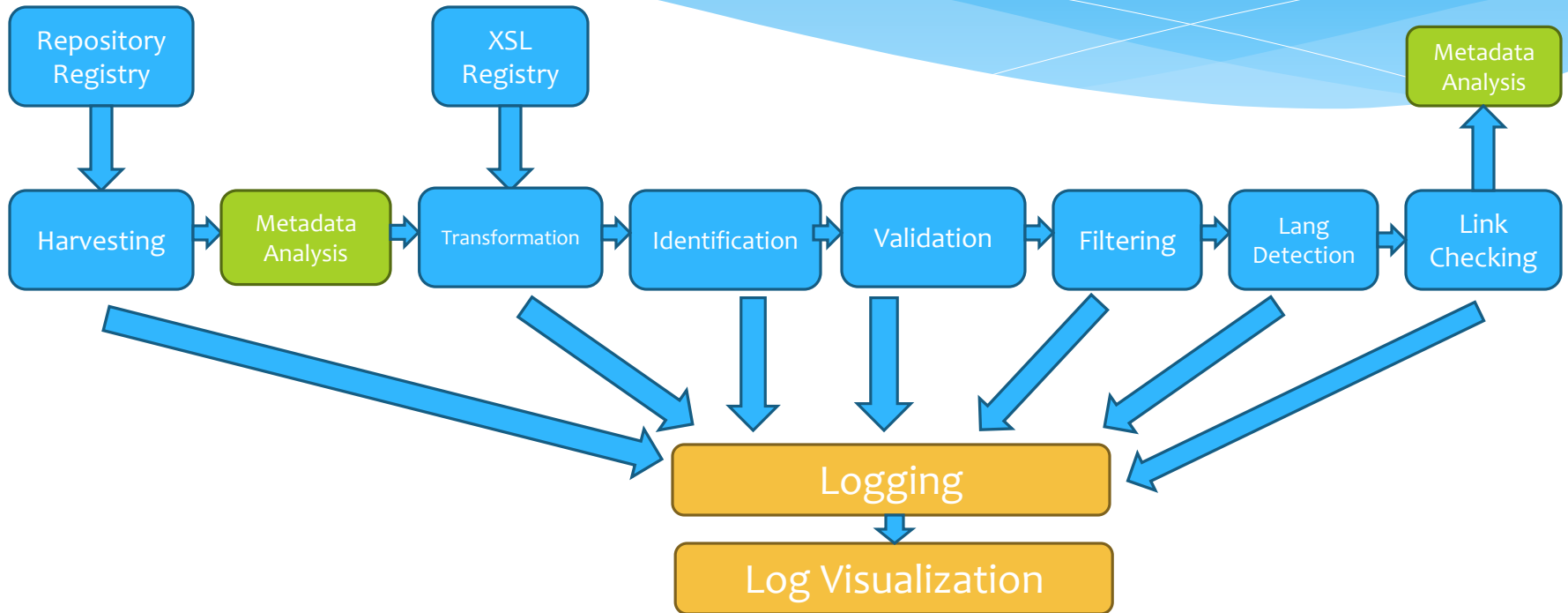
Provide us your feedback here



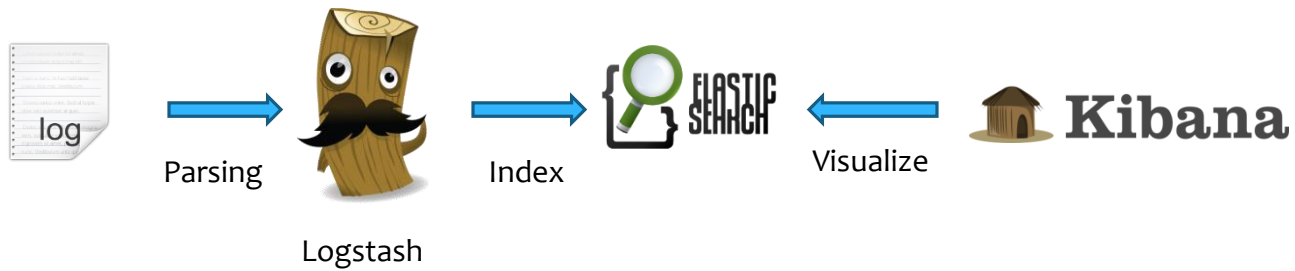
Statistics for 2nd Harvesting Cycle

Repository	Harvesting	Usable	Repository	Harvesting	Usable	Repository	Harvesting	Usable
Dryades	251,047	250,591	SET for the resources Natural Europe	3,089	2,926	Photodentro/Educational Video repository	676	676
MACE	186,152	94,725	OpenScout	56,247	40,851	CARNet School Portal	513	513
Moodle for CARNet's Users	89,615	89,423	I2G Intergeo	2,847	2,846	Bulgarian National Educational Repository /Resursi	500	500
Discover the COSMOS	81,520	81,380	SET for the pathways Natural Europe	125	123	Rural Observatory	409	399
LA FLOR	56,858	54,036	OER Commons (Green OER)	2,770	2,389	Digis	389	386
Znam.bg	60,986	60,986	Photodentro/ Digital School LOR	2,702	2,702	OSR	1977	343
Organic.Edun et	10,937	9,169	LaProf	752	752	SIVICO LRE Repository	92	92
Miksike's LeFo	3,798	3,797	Educanext (LMS.at, Bildungspool)	322	322			
Total harvesting				814,323		Usable	699,927	

Workflow Representation



Logging System



- Live automatic updates.
- Good for repository administrators and Data providers.

Metadata Aggregation Workflow

[Aggregation Results Visualization](#)

Brainstorming

- * Distributed metadata indexing to Elastic Search cluster.
 - * Scalability.
 - * Replication.
 - * Distributed backup.
 - * Availability.
 - * Search API over Repository.
- * Data Providers registry content exposure using Elastic Search.

